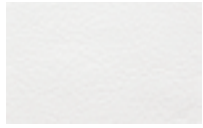


Stoff- und Lederauswahl | choix de tissus et cuirs | choice of fabrics and leathers

2. Preiskategorie | 2^e catégorie de prix | 2nd price range

Kul 301–322, Kunstleder | cuir synthétique | synthetic leather

Oberfläche | surface: 100% Polyurethan | polyurethane, Basis | base: 50% Polyester, 50% Baumwolle | coton | cotton



301 white



302 sepia



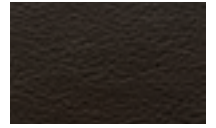
303 beige



304 violet



306 lime



307 cabana



310 petrol



312 black



314 rubin



319 mouse



321 pepper

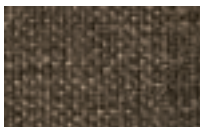


322 saphir

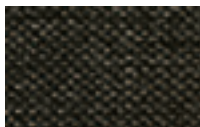
Serra 470–474, 57% Polyester, 43% Polypropylen



470 sand



471 sierra



474 tabak

3. Preiskategorie | 3^e catégorie de prix | 3rd price range

Alpina 390–394, 100% Polyester



390 lightgrey



391 anthrazit



392 red



393 navy



394 smoke

Boston 650–654, Oberfläche | surface: 100% Polyester, Basis | base: 70% Polyester, 30% Baumwolle | coton | cotton



650 clay



651 bean



652 mocca



653 turtle



654 tizo

Campos 372–376, Kunstleder | cuir synthétique | synthetic leather

Oberfläche | surface: 100% Polyurethan | polyurethane, Basis | base: 71% Polyester, 29% Baumwolle | coton | cotton



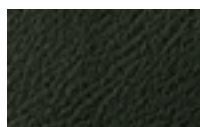
372 blanc



373 creme



374 cafe



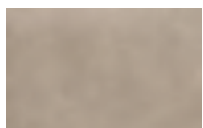
375 nero



376 kit

Casual 330–334, Kunstleder | cuir synthétique | synthetic leather

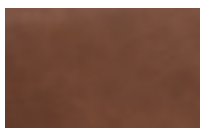
Oberfläche | surface: 100% Polyurethan | polyurethane, Basis | base: 60% Polyester, 40% Baumwolle | coton | cotton



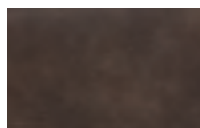
330 sahara



331 cannelle



332 cognac



333 olive



334 carbon

Kabo 630–634, 100% Polyester



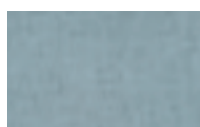
630 calc



631 rust



632 apple



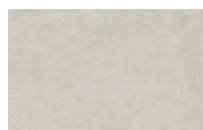
633 lagoon



634 belle

3. Preiskategorie | 3^e catégorie de prix | 3rd price range **Fortsetzung** | continuité | continuation

Kitana 600–604, 100% Polyester



600 beige



601 nougat



602 grigio



603 aqua



604 anthrazit

Prisma 670–674, 100% Polyester



670 polar



671 zircon



672 jade



673 smaragd



674 silver

Ranch 660–664, 100% Baumwolle | coton | cotton



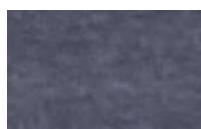
660 stone



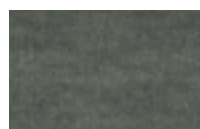
661 grit



662 jeans



663 indigo

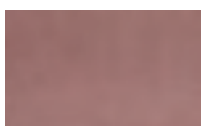


664 hunter

Shine 680–685, 100% Polyester



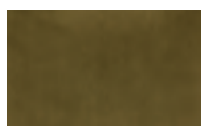
680 wine



681 rose



682 opal



683 musk



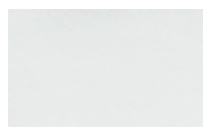
684 curry



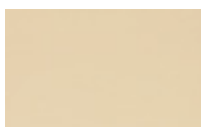
685 stone

4. Preiskategorie | 4^e catégorie de prix | 4th price range

Real* 505–516, EchtLeder | cuir véritable | real leather



505 bianco



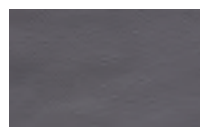
506 ecru



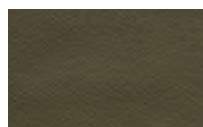
507 creta



508 moro



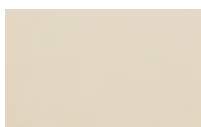
509 ardesia



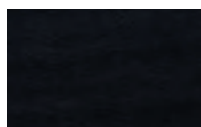
513 falda



514 cenere



515 panna



516 notte

Vintage* 520 + 521, Echtleder | cuir véritable | real leather



520 fango



521 marone

Vintage ist ein Leder, welches mit Wachs behandelt wird um eine «Used-Optik» zu erhalten.

Vintage est un cuir véritable qui est traité à la cire afin d'obtenir un «aspect usé».

Vintage real leather is treated with wax to achieve a «Used-Look».

Serra, Boston, Kabo, Prisma, Alpina, Kitana und Ranch können chemisch gereinigt werden. Die abgebildeten Farben können von den Originalfarben und Strukturen abweichen.

*Narben, Farb- und Strukturunterschiede sowie Faltenbildung sind Naturmerkmale von echtem Leder. Leder enthält nichttextile Teile tierischen Ursprungs.

Nous conseillons un nettoyage à sec pour les matières Serra, Boston, Kabo, Prisma, Alpina, Kitana et Ranch. Les couleurs et les structures des illustrations peuvent être différentes des couleurs et des structures originales.

*Les cicatrices, les différences de teinte et de structure ainsi que la formation de plis sont des marques naturelles du cuir véritable. Le cuir contient des éléments non textiles d'origine animale.

The covers Serra, Boston, Kabo, Prisma, Alpina, Kitana and Ranch can be dry cleaned. The pictured colours can be different than the original colours and structures.

*Any marks, differences of colour or structure or wrinkle formations are natural characteristics of real leather. Leather includes non-textile parts of animal origin.