

Stoff- und Kunstlederauswahl | choix de tissus et cuirs synthétiques | choice of fabrics and synthetic leathers

3. Preiskategorie | 3^e catégorie de prix | 3rd price range

Alpina 390–394, 100% Polyester



390 lightgrey



391 anthrazit



392 red

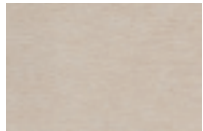


393 navy

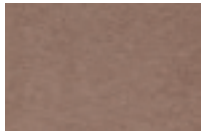


394 smoke

Boston 650–654, Oberfläche | surface: 100% Polyester, Basis | base: 70% Polyester, 30% Baumwolle | coton | cotton



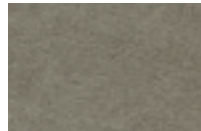
650 clay



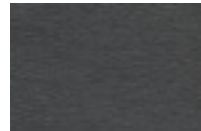
651 bean



652 mocca



653 turtle



654 tizo

Campos 372–376, Kunstleder | cuir synthétique | synthetic leather

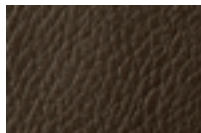
Oberfläche | surface: 100% Polyurethan | polyurethane, Basis | base: 71% Polyester, 29% Baumwolle | coton | cotton



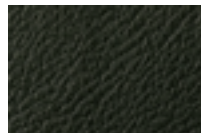
372 blanc



373 creme



374 cafe



375 nero



376 kit

Casual 330–334, Kunstleder | cuir synthétique | synthetic leather

Oberfläche | surface: 100% Polyurethan | polyurethane, Basis | base: 60% Polyester, 40% Baumwolle | coton | cotton



330 sahara



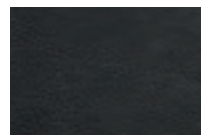
331 cannelle



332 cognac

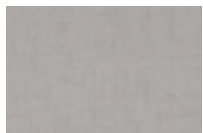


333 olive



334 carbon

Kabo 630–634, 100% Polyester



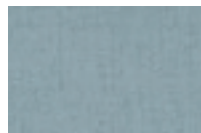
630 calc



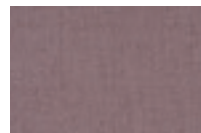
631 rust



632 apple

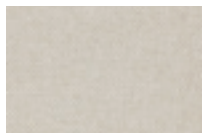


633 lagoon



634 belle

Kitana 600–604, 100% Polyester



600 beige



601 nougat



602 grigio



603 aqua



604 anthrazit

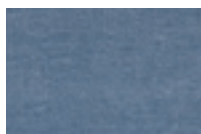
Ranch 660–664, 100% Baumwolle | coton | cotton



660 stone



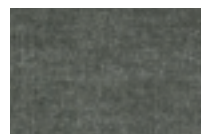
661 grit



662 jeans



663 indigo



664 hunter

Shine 680–685, 100% Polyester



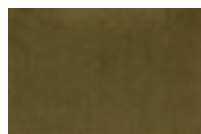
680 wine



681 rose



682 opal



683 musk



684 curry



685 stone